



Technical Recommendation

Jakarta Composite Index Range Today

5,950 / 5,860 **6,074 – 6,150 / 6,250 / 6,700 – 6,800**
Support Resistance

Published on 15 June 2026



Jakarta Composite Index

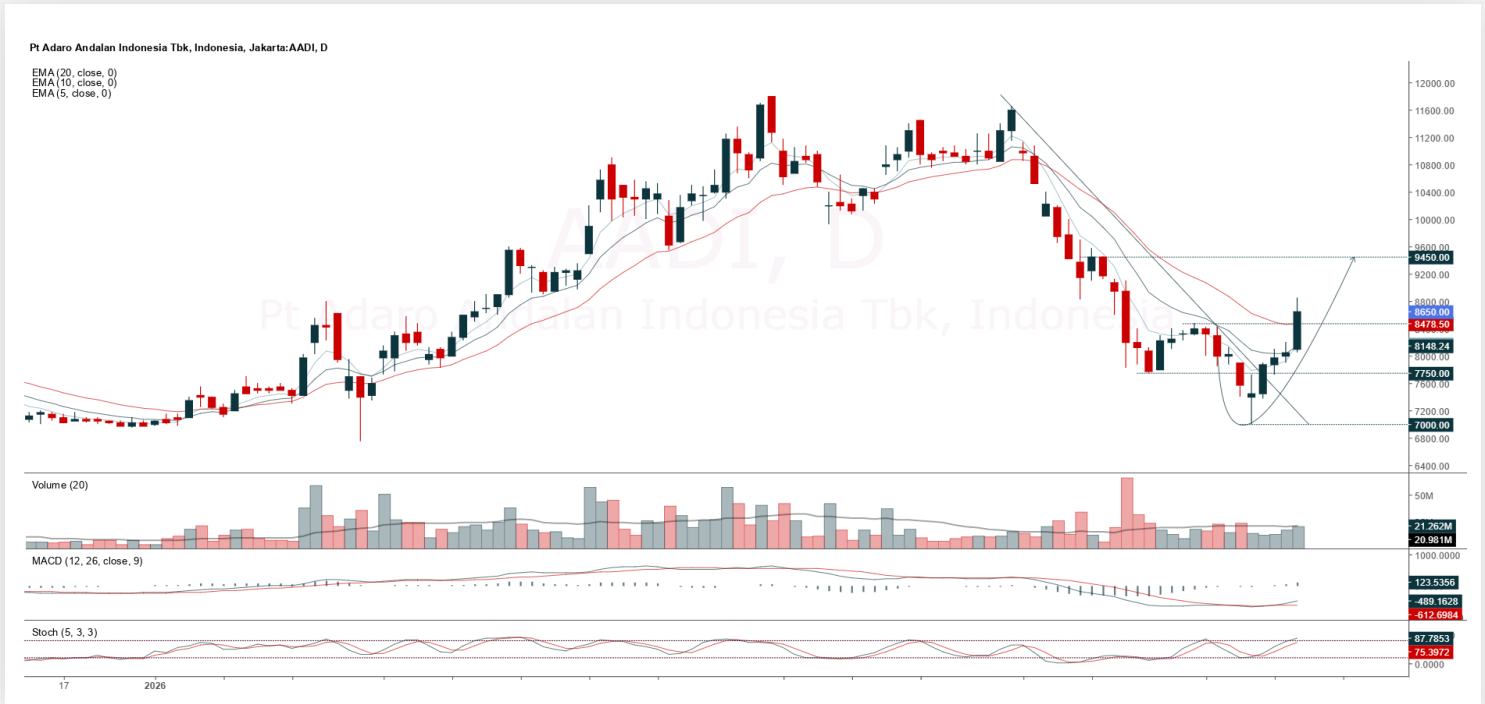
JCI Finally entered back into the 6,000s territory after laying flat below it for 2 weeks, specifically closing at the figure of 6,007.66 after appreciating 121.62 pts / +2.07%. **KIWOOM RESEARCH** is quite optimistic to recommend gradual **AVERAGE UP**, focusing Support on the MA10 / 5,860 currently if a minor pullback has to occur after trying out a breakout of the MA20 Resistance / 6,150 as the next **TARGET**. Technically, JCI must be steady enough to remain above that MA10 Support level to maintain this early recovery; then breaking out of the MA20 will become a significant turning point so that (at least) JCI can rise to 6,800 (= Resistance upper channel – downtrend) as the medium-term **TARGET** in the 2nd semester.

ADVISE: **AVERAGE UP** accordingly.



AADI

Adaro Andalan Indonesia Tbk.



(AADI). Price continues to strengthen with a breakout of the resistance. The opportunity to strengthen is supported by the Stochastic moving bullish indicator, the MACD line moving bullish (histogram moving positive) and the volume trend increasing.

ADVICE: Buy on support or trading buy.

Entry Buy	Target Price	Support	Cut Loss
8,350 – 8,650	9,000 – 9,350	8,200 – 8,350	8,150



INCO

Vale Indonesia Tbk.



(INCO). Price begins to swing low and is testing the resistance. The opportunity to strengthen is supported by the MACD line golden cross indicator (histogram moving positive again) and volume increasing.

ADVICE: Accumulation buy or buy on break.

Entry Buy	Target Price	Support	Cut Loss
4,550 – 4,710	4,900 – 5,100	4,460 – 4,550	4,440



INET

Sinergi Inti Andalan Prima Tbk.



(INET). Price strengthens again and has the potential to test the nearest resistance. The opportunity to strengthen is supported by the Stochastic moving bullish indicator, the MACD line potential golden cross (histogram moving to the positive direction) and volume increasing.

ADVICE: Accumulation buy or trading buy.

Entry Buy	Target Price	Support	Cut Loss
192 – 199	208 – 216	188 – 192	186



UNTR

United Tractors Tbk.



(UNTR). Price breaks the nearest resistance and has the opportunity to test the trendline resistance. The opportunity to strengthen is supported by the Stochastic moving bullish indicator, the MACD line golden cross (histogram moving positive again) and volume increasing.

ADVICE: Accumulation buy or buy on weakness.

Entry Buy	Target Price	Support	Cut Loss
21,925 – 22,500	23,175 – 23,850	21,625 – 21,925	21,575



Forecast – Technical Analysis

Ticker	MA5	RSI Rec	MACD Trend	Recomm.	Pivot Point	Support 1	Support 2	Resistance 1	Resistance 2	Stop Loss Level
JCI	Negative	Trading	Positive	Hold	6,000	5,925	5,875	6,050	6,125	5,800
AADI	Negative	Trading	Positive	Hold	8,425	7,975	7,625	8,775	9,225	7,500
ADMR	Negative	Trading	Positive	Hold	1,550	1,460	1,395	1,615	1,705	1,375
ADRO	Negative	Trading	Positive	Hold	2,285	2,230	2,195	2,320	2,375	2,160
AKRA	Negative	Trading	Negative	Sell	1,275	1,235	1,210	1,300	1,340	1,190
AMMN	Negative	Trading	Positive	Hold	3,315	3,085	2,885	3,515	3,745	2,840
AMRT	Negative	Trading	Positive	Hold	1,365	1,315	1,275	1,405	1,455	1,255
ANTM	Negative	Trading	Positive	Hold	2,830	2,750	2,680	2,900	2,980	2,640
ASII	Negative	Oversold	Negative	Spec. Buy	4,760	4,705	4,670	4,795	4,850	4,595
BBCA	Negative	Trading	Positive	Hold	5,975	5,875	5,775	6,075	6,175	5,700
BBNI	Negative	Trading	Negative	Sell	3,575	3,500	3,445	3,630	3,705	3,395
BBRI	Negative	Trading	Negative	Sell	2,865	2,830	2,795	2,900	2,935	2,755
BBTN	Negative	Trading	Negative	Sell	1,235	1,180	1,130	1,285	1,340	1,115
BMRI	Negative	Trading	Positive	Hold	4,260	4,200	4,140	4,320	4,380	4,080
BRPT	Negative	Trading	Negative	Sell	1,715	1,655	1,625	1,745	1,805	1,600
BUMI	Negative	Trading	Positive	Hold	152	141	133	160	171	131
CPIN	Positive	Oversold	Negative	Spec. Buy	3,305	3,270	3,205	3,370	3,405	3,155
CUAN	Negative	Trading	Positive	Hold	700	670	630	740	770	620
DEWA	Negative	Trading	Positive	Hold	316	298	282	332	350	278
EMTK	Negative	Oversold	Negative	Spec. Buy	545	520	505	560	585	497
ESSA	Negative	Oversold	Negative	Spec. Buy	605	585	565	625	645	555
EXCL	Positive	Oversold	Negative	Spec. Buy	2,595	2,535	2,465	2,665	2,725	2,425
GOTO	Negative	Oversold	Positive	Spec. Buy	50	50	50	50	50	49
HRTA	Positive	Oversold	Negative	Spec. Buy	1,910	1,865	1,800	1,975	2,020	1,775
ICBP	Positive	Trading	Negative	Hold	6,325	6,175	6,050	6,450	6,600	5,950
INCO	Positive	Trading	Positive	Spec. Buy	4,590	4,275	4,060	4,805	5,125	3,995
INDF	Negative	Trading	Negative	Sell	6,425	6,150	6,025	6,550	6,825	5,925
INKP	Negative	Trading	Positive	Hold	7,675	7,550	7,450	7,775	7,900	7,350
ISAT	Positive	Oversold	Negative	Spec. Buy	1,875	1,840	1,790	1,925	1,960	1,765
ITMG	Negative	Trading	Positive	Hold	23,000	22,225	21,600	23,625	24,400	21,275
JPFA	Positive	Oversold	Negative	Spec. Buy	1,885	1,840	1,795	1,930	1,975	1,770
KLBF	Negative	Oversold	Positive	Spec. Buy	745	730	700	775	790	690
MAPI	Negative	Overbought	Negative	Strong Sell	1,490	1,485	1,485	1,490	1,495	1,460
MBMA	Negative	Trading	Positive	Hold	468	450	434	484	500	427
MDKA	Positive	Trading	Positive	Spec. Buy	2,565	2,455	2,415	2,605	2,715	2,375
MEDC	Negative	Oversold	Negative	Spec. Buy	1,215	1,165	1,135	1,245	1,295	1,120
PGAS	Positive	Oversold	Negative	Spec. Buy	1,540	1,515	1,490	1,565	1,590	1,465
PGEO	Negative	Trading	Negative	Sell	855	840	820	875	890	810
PTBA	Negative	Trading	Negative	Sell	2,610	2,550	2,490	2,670	2,730	2,455
SCMA	Negative	Oversold	Negative	Spec. Buy	200	194	190	204	210	187
SMGR	Positive	Oversold	Negative	Spec. Buy	1,550	1,510	1,490	1,570	1,610	1,465
TLKM	Positive	Trading	Negative	Hold	2,905	2,825	2,785	2,945	3,025	2,740
TOWR	Negative	Oversold	Negative	Spec. Buy	341	328	319	350	363	314
UNTR	Negative	Oversold	Positive	Spec. Buy	22,275	21,750	21,350	22,675	23,200	21,025
UNVR	Negative	Trading	Negative	Sell	1,655	1,640	1,625	1,670	1,685	1,600
WIFI	Negative	Oversold	Negative	Spec. Buy	1,590	1,555	1,535	1,610	1,645	1,510



Kiwoom Research Team



HEAD OFFICE

Treasury Tower 27th Floor Unit A, District 8 Kawasan SCBD Lot 28,
Jl.Jend.Sudirman Kav 52-53, Jakarta Selatan 12190

Tel : (021) 5010 5800
Fax : (021) 5010 5820
Email : cs@kiwoom.co.id

PT Kiwoom Sekuritas Indonesia is licensed and supervised by the Financial Services Authority (OJK)

OTHER DISCLOSURES

All Kiwoom's research reports made available to clients are simultaneously available on our own website <http://www.kiwoom.co.id/>. Not all research content is redistributed, e-mailed or made available to third-party aggregators. For all research reports available on a particular stock, please contact your sales representative. Any data discrepancies in this report could be the result of different calculations and/or adjustments.

DISCLAIMER

This report has been prepared and issued by PT Kiwoom Sekuritas Indonesia. Information has been obtained from sources believed to be reliable but Kiwoom Securities do not warrant its completeness or accuracy. Forward-looking information or statements in this report contain information that is based on forecast of future results, estimates of amounts not yet determinable, assumptions, and therefore involve known and unknown risks and uncertainties which may cause the actual results, performance or achievements of their subject matter to be materially different from current expectations. To the fullest extent allowed by law, PT Kiwoom Sekuritas Indonesia shall not be liable for any direct, indirect or consequential losses, loss of profits, damages, costs or expenses incurred or suffered by any person or organization arising from reliance on or use of any information contained on this report. The information that we provide should not be construed in any manner whatsoever as, personalized advice. No mention of a particular security in this report constitutes a recommendation to buy, sell or hold that or any security, or that any particular security, portfolio of securities, transaction or investment strategy is suitable for any specific person. This report is being supplied to you solely for your information and may not be reproduced by, further distributed to or published in whole or in part by, any other person.