



JSMR

Jasa Marga (Persero) Tbk.



(JSMR). Price strengthens again and is testing the nearest resistance. The opportunity to strengthen is supported by the Stochastic moving bullish indicator, the MACD line golden cross (histogram moving positive again) and volume increasing.

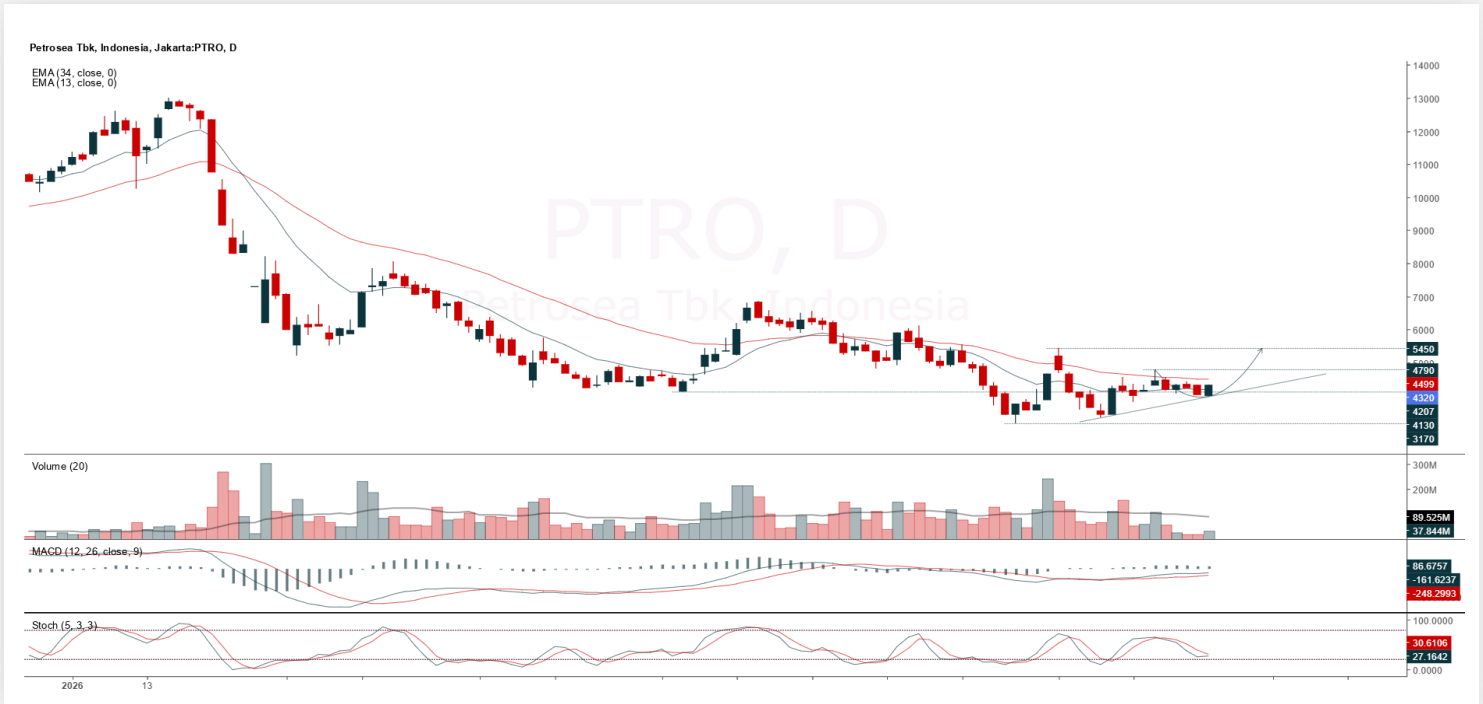
ADVICE: Accumulation buy or trading buy.

Entry Buy	Target Price	Support	Cut Loss
2,770 – 2,850	2,940 – 3,030	2,730 – 2,770	2,710



PTRO

Petrosea Tbk.



(PTRO). Price begins to rebound from the support area and breaks the EMA 13. The opportunity to strengthen is supported by the Stochastic potential golden cross indicator, the MACD line moving bullish (histogram moving positive) and volume increasing.

ADVICE: Accumulation buy or trading buy.

Entry Buy	Target Price	Support	Cut Loss
4,210 – 4,320	4,450 – 4,580	4,150 – 4,210	4,130



RATU

Raharja Energi Cepu Tbk.



(RATU). Price begins to rebound from the support area. The opportunity to strengthen is supported by the Stochastic golden cross indicator, the MACD line moving bullish (histogram moving positive) and volume starting to increase.

ADVICE: Accumulation buy or trading buy.

Entry Buy	Target Price	Support	Cut Loss
4,910 – 5,050	5,225 – 5,375	4,840 – 4,910	4,820



SMGR

Semen Indonesia (Persero) Tbk.



(SMGR). Price closed rallying and is testing the resistance area. The opportunity to strengthen is supported by the Stochastic golden cross indicator, the MACD line moving bullish (histogram moving positive) and volume still strong enough.

ADVICE: Hold or trading buy.

Entry Buy	Target Price	Support	Cut Loss
1,470 – 1,510	1,560 – 1,605	1,450 – 1,470	1,440

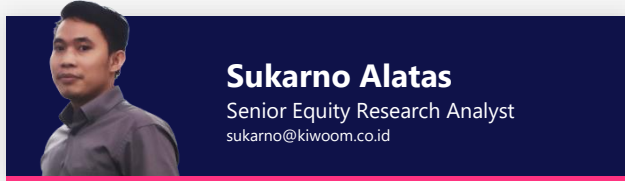


Forecast – Technical Analysis

Ticker	MA5	RSI Rec	MACD Trend	Recomm.	Pivot Point	Support 1	Support 2	Resistance 1	Resistance 2	Stop Loss Level
JCI	Positive	Trading	Positive	Spec. Buy	6,075	6,025	5,950	6,175	6,200	5,850
AADI	Positive	Trading	Positive	Spec. Buy	8,075	8,000	7,925	8,150	8,225	7,800
ADMR	Positive	Trading	Positive	Spec. Buy	1,520	1,500	1,460	1,560	1,580	1,440
ADRO	Positive	Trading	Positive	Spec. Buy	2,280	2,260	2,220	2,320	2,340	2,185
AKRA	Negative	Trading	Positive	Hold	1,260	1,245	1,210	1,295	1,310	1,190
AMMN	Negative	Trading	Positive	Hold	3,725	3,650	3,525	3,850	3,925	3,470
AMRT	Negative	Trading	Positive	Hold	1,415	1,375	1,320	1,470	1,510	1,300
ANTM	Positive	Trading	Positive	Spec. Buy	2,905	2,845	2,765	2,985	3,045	2,720
ASII	Positive	Oversold	Positive	Buy	4,710	4,640	4,580	4,770	4,840	4,510
BBCA	Positive	Trading	Positive	Spec. Buy	6,150	6,075	6,025	6,200	6,275	5,925
BBNI	Positive	Trading	Positive	Spec. Buy	3,450	3,410	3,350	3,510	3,550	3,300
BBRI	Positive	Trading	Positive	Spec. Buy	2,895	2,850	2,815	2,930	2,975	2,775
BBTN	Positive	Trading	Negative	Hold	1,165	1,140	1,100	1,205	1,230	1,080
BMRI	Positive	Trading	Positive	Spec. Buy	4,155	4,100	4,035	4,220	4,275	3,975
BRPT	Positive	Trading	Positive	Spec. Buy	1,630	1,585	1,530	1,685	1,730	1,510
BUMI	Positive	Trading	Positive	Spec. Buy	164	159	152	171	176	149
CPIN	Positive	Oversold	Negative	Spec. Buy	3,165	3,120	3,075	3,210	3,255	3,030
CUAN	Positive	Trading	Positive	Spec. Buy	670	650	625	695	715	615
DEWA	Positive	Trading	Positive	Spec. Buy	355	345	333	367	377	328
EMTK	Positive	Oversold	Positive	Buy	550	535	525	560	575	515
ESSA	Negative	Trading	Positive	Hold	655	645	635	665	675	625
EXCL	Positive	Oversold	Positive	Buy	2,515	2,500	2,465	2,550	2,565	2,430
GOTO	Negative	Oversold	Positive	Spec. Buy	50	50	50	50	50	49
HRTA	Positive	Trading	Positive	Spec. Buy	2,070	2,035	1,990	2,115	2,150	1,960
ICBP	Negative	Trading	Positive	Hold	6,575	6,500	6,400	6,675	6,750	6,300
INCO	Positive	Trading	Positive	Spec. Buy	5,075	4,900	4,735	5,250	5,425	4,665
INDF	Negative	Trading	Positive	Hold	6,750	6,700	6,675	6,775	6,825	6,575
INKP	Positive	Oversold	Positive	Buy	7,350	7,225	7,100	7,475	7,600	6,975
ISAT	Positive	Oversold	Negative	Spec. Buy	1,750	1,720	1,680	1,790	1,820	1,655
ITMG	Positive	Trading	Positive	Spec. Buy	22,425	22,275	22,025	22,675	22,825	21,700
JPFA	Negative	Oversold	Negative	Spec. Buy	1,900	1,875	1,840	1,935	1,960	1,810
KLBF	Positive	Trading	Positive	Spec. Buy	720	675	630	765	810	620
MAPI	Negative	Overbought	Negative	Strong Sell	1,520	1,510	1,505	1,525	1,535	1,480
MBMA	Negative	Trading	Positive	Hold	520	500	481	540	555	474
MDKA	Negative	Trading	Positive	Hold	2,885	2,820	2,745	2,960	3,025	2,705
MEDC	Positive	Oversold	Positive	Buy	1,130	1,110	1,085	1,155	1,175	1,070
PGAS	Positive	Oversold	Positive	Buy	1,550	1,535	1,515	1,570	1,585	1,490
PGEO	Negative	Trading	Positive	Hold	900	890	865	925	935	855
PTBA	Positive	Oversold	Negative	Spec. Buy	2,470	2,440	2,400	2,510	2,540	2,365
SCMA	Positive	Oversold	Positive	Buy	199	192	187	204	211	184
SMGR	Positive	Oversold	Positive	Buy	1,490	1,445	1,405	1,530	1,575	1,385
TLKM	Positive	Oversold	Negative	Spec. Buy	2,540	2,465	2,430	2,575	2,650	2,390
TOWR	Positive	Trading	Positive	Spec. Buy	371	363	357	377	385	351
UNTR	Positive	Oversold	Positive	Buy	22,425	22,275	22,100	22,600	22,750	21,750
UNVR	Negative	Trading	Positive	Hold	1,675	1,655	1,630	1,700	1,720	1,605
WIFI	Positive	Trading	Positive	Spec. Buy	1,670	1,645	1,615	1,700	1,725	1,590



Kiwoom Research Team



HEAD OFFICE

Treasury Tower 27th Floor Unit A, District 8 Kawasan SCBD Lot 28,
Jl.Jend.Sudirman Kav 52-53, Jakarta Selatan 12190

Tel : (021) 5010 5800
Fax : (021) 5010 5820
Email : cs@kiwoom.co.id

PT Kiwoom Sekuritas Indonesia is licensed and supervised by the Financial Services Authority (OJK)

OTHER DISCLOSURES

All Kiwoom's research reports made available to clients are simultaneously available on our own website <http://www.kiwoom.co.id/>. Not all research content is redistributed, e-mailed or made available to third-party aggregators. For all research reports available on a particular stock, please contact your sales representative. Any data discrepancies in this report could be the result of different calculations and/or adjustments.

DISCLAIMER

This report has been prepared and issued by PT Kiwoom Sekuritas Indonesia. Information has been obtained from sources believed to be reliable but Kiwoom Securities do not warrant its completeness or accuracy. Forward-looking information or statements in this report contain information that is based on forecast of future results, estimates of amounts not yet determinable, assumptions, and therefore involve known and unknown risks and uncertainties which may cause the actual results, performance or achievements of their subject matter to be materially different from current expectations. To the fullest extent allowed by law, PT Kiwoom Sekuritas Indonesia shall not be liable for any direct, indirect or consequential losses, loss of profits, damages, costs or expenses incurred or suffered by any person or organization arising from reliance on or use of any information contained on this report. The information that we provide should not be construed in any manner whatsoever as, personalized advice. No mention of a particular security in this report constitutes a recommendation to buy, sell or hold that or any security, or that any particular security, portfolio of securities, transaction or investment strategy is suitable for any specific person. This report is being supplied to you solely for your information and may not be reproduced by, further distributed to or published in whole or in part by, any other person.